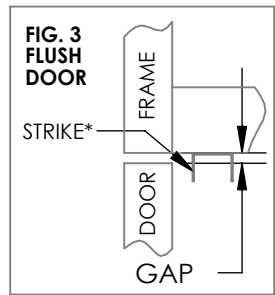
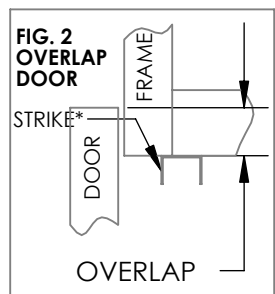
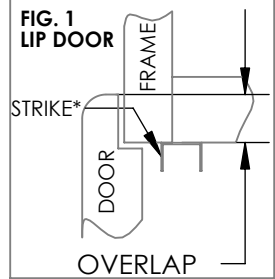
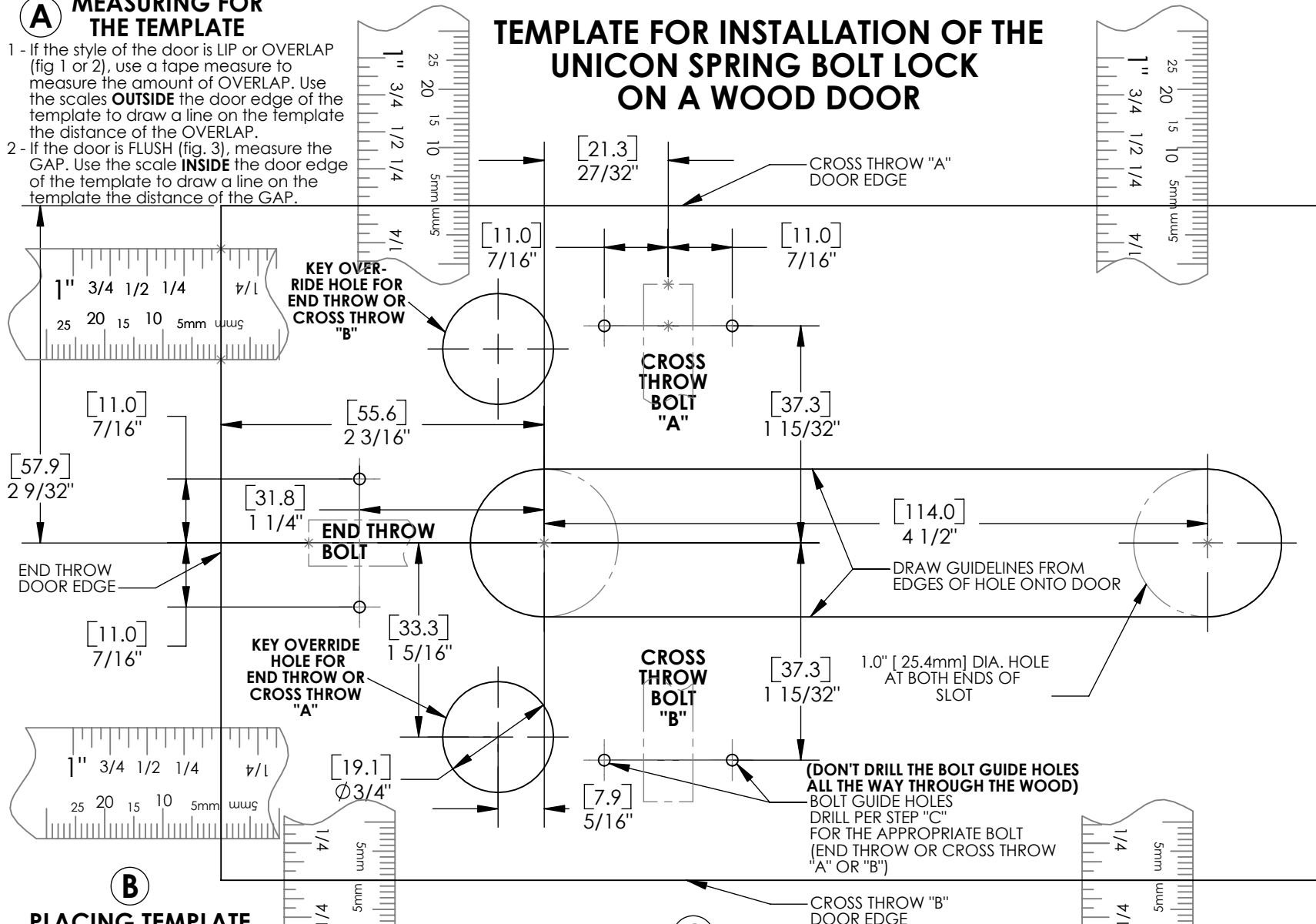


### A MEASURING FOR THE TEMPLATE

- 1 - If the style of the door is LIP or OVERLAP (fig 1 or 2), use a tape measure to measure the amount of OVERLAP. Use the scales **OUTSIDE** the door edge of the template to draw a line on the template the distance of the OVERLAP.
- 2 - If the door is FLUSH (fig. 3), measure the GAP. Use the scale **INSIDE** the door edge of the template to draw a line on the template the distance of the GAP.

## TEMPLATE FOR INSTALLATION OF THE UNICON SPRING BOLT LOCK ON A WOOD DOOR



### B PLACING TEMPLATE ON THE INSIDE OF THE DOOR\*

- 1 - Position the line drawn in step "A" on the bolt edge of the door.
  - 2 - Move the template along the the bolt edge to the desired position.
  - 3 - Tape in place.
- \* - Positioning is based on assumed STRIKE mounting in figures.  
**(If mounting is different, adjust template position accordingly.)**

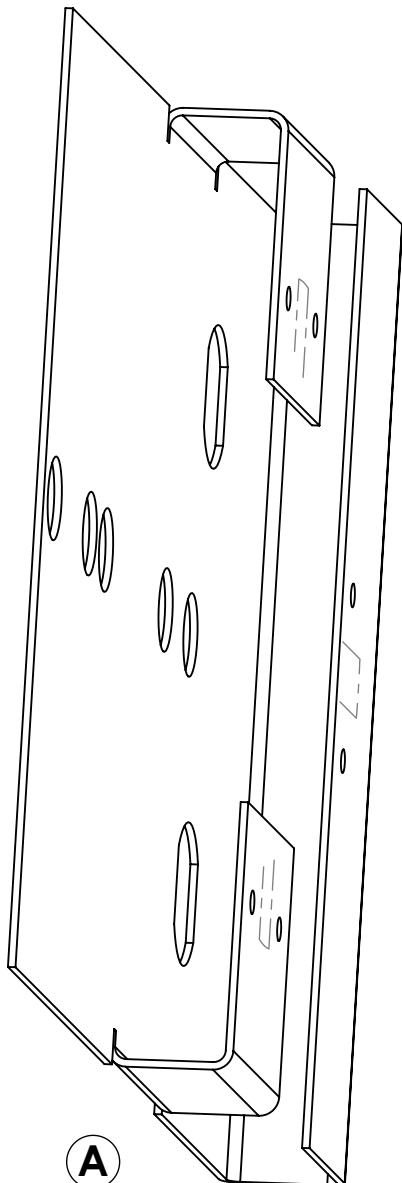
### C PREPARING THE DOOR

- 1 - Center punch the bolt guide holes and the center of the two 1.0" [25.4mm] holes.
- 2 - Drill all holes with the 1/16" [1.6mm] drill bit for soft wood, 5/64" [2.0mm] drill bit for hardwood. **(DON'T DRILL THE BOLT GUIDE HOLES ALL THE WAY THROUGH THE WOOD).**
- 3 - Using the 1.0" [25.4mm] drill bit, drill the hole at each end of the slot. (Drill halfway from each side to avoid splintering the wood.)
- 4 - With the ruler draw the two guidelines on the door connecting the holes.
- 5 - Saw out the slot along the guidelines.
- 6 - Use the file to smooth the edges and adjust the size of the opening.
- 7 - If you are installing a Key Override Cylinder, drill the 3/4" [19mm] hole for the bolt direction you are using. (Drill halfway from each side to avoid splintering the wood.)

### TOOLS REQUIRED

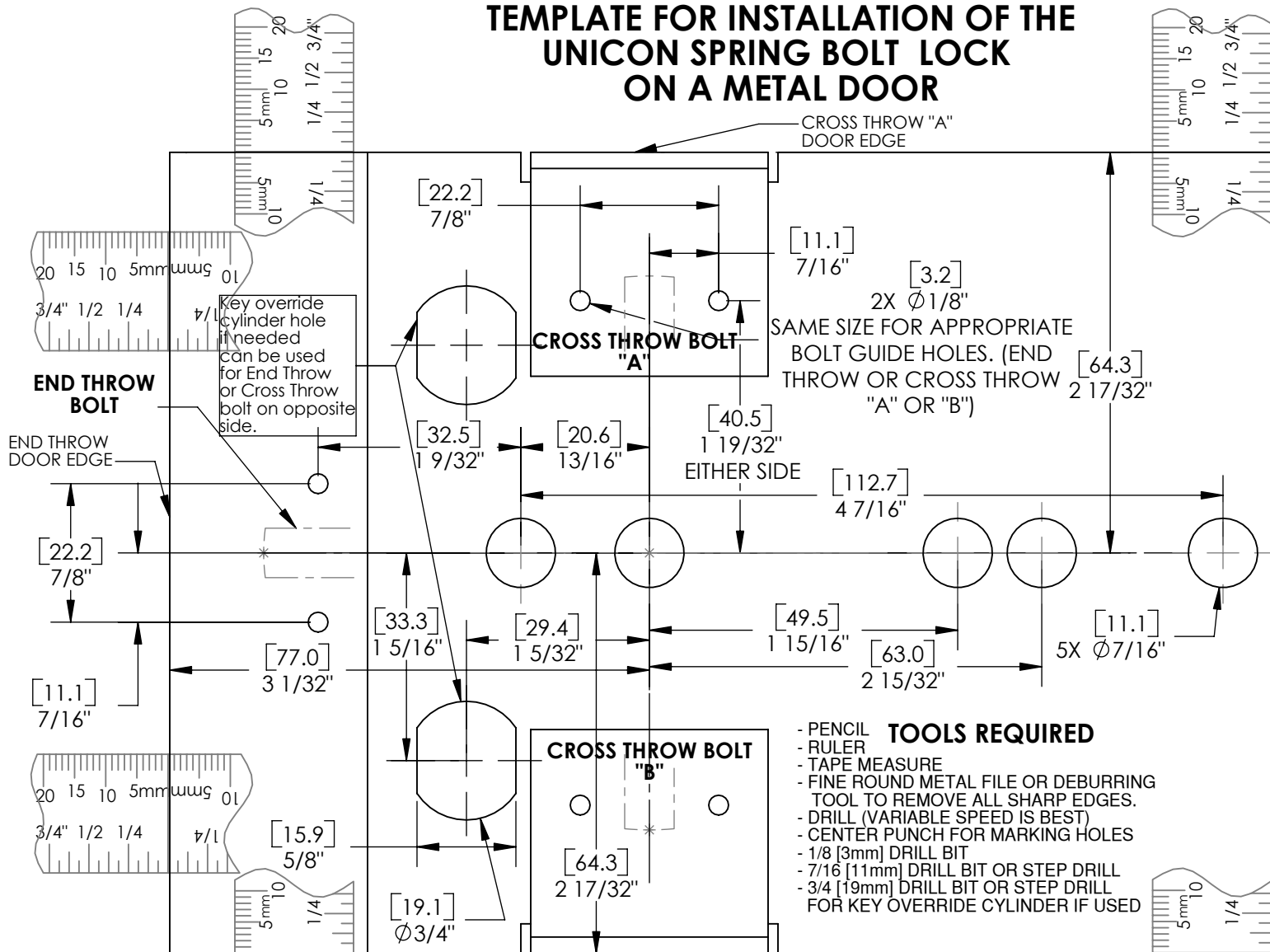
- PENCIL
- RULER
- TAPE MEASURE
- FINE CUTTING WOOD FILE
- DRILL (VARIABLE SPEED IS BEST)
- SCRIBE OR AWL FOR MARKING HOLES
- 1/16" DRILL BIT [1.6mm], FOR SOFT WOOD
- 5/64" DRILL BIT [2.0mm], FOR HARDWOOD
- 3/4" [19mm] WOOD BIT, IF THE KEY OVERRIDE CYLINDER IS INSTALLED
- 1.0" [25.4mm] WOOD BIT OR HOLE SAW
- KEYHOLE SAW, COPING SAW, OR JIG SAW

# TEMPLATE FOR INSTALLATION OF THE UNICON SPRING BOLT LOCK ON A METAL DOOR



**A**  
MEASURING FOR THE TEMPLATE

- (SEE DOOR STYLE FIGURES ON OTHER SIDE)\*
- 1 - If the style of the door is LIP or OVERLAP (fig 1 or 2), use a tape measure to measure the amount of OVERLAP. Use the scales **OUTSIDE** the door edge of the template to draw a line on the template the distance of the OVERLAP.
  - 2 - If the door is FLUSH (fig. 3), measure the GAP. Use the scales **INSIDE** the door edge of the template to draw a line on the template the distance of the GAP.



**B**  
PLACING TEMPLATE ON THE INSIDE OF THE DOOR\*

- 1 - Position the line drawn in step "A" on the template at the bolt edge of the door.
  - 2 - Move the template along the bolt edge to the desired position.
  - 3 - Tape in place.
- \* - Positioning is based on the assumed STRIKE mounting in figures. (If mounting is different, adjust template position accordingly.)

**C**  
PREPARING DOOR FOR BOLT GUIDE

- 1 - Mark the two holes using the dimensions shown on this sheet for the appropriate bolt. (END THROW or CROSS THROW "A" or "B")
- 2 - Drill the two holes with an 1/8" [3mm] drill bit.
- 3 - Deburr all holes.

**D**  
PREPARING THE DOOR FOR LOCK MOUNTING

- 1 - Center punch the five lock mounting holes.
- 2 - Drill all holes with the 7/16" [11mm] drill bit. (If a step drill is not used, a pilot hole may be required)
- 3 - Punch the key cylinder hole if key override is used. (A 3/4" [19mm] hole can be drilled, but this method reduces the key override security.)
- 4 - Deburr all holes using a file or deburring tool.

## TOOLS REQUIRED

- PENCIL
- RULER
- TAPE MEASURE
- FINE ROUND METAL FILE OR DEBURRING TOOL TO REMOVE ALL SHARP EDGES.
- DRILL (VARIABLE SPEED IS BEST)
- CENTER PUNCH FOR MARKING HOLES
- 1/8 [3mm] DRILL BIT
- 7/16 [11mm] DRILL BIT OR STEP DRILL
- 3/4 [19mm] DRILL BIT OR STEP DRILL FOR KEY OVERRIDE CYLINDER IF USED