

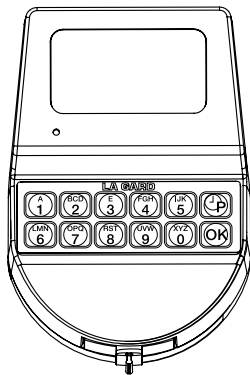
LA GARD

PRODUCT BULLETIN

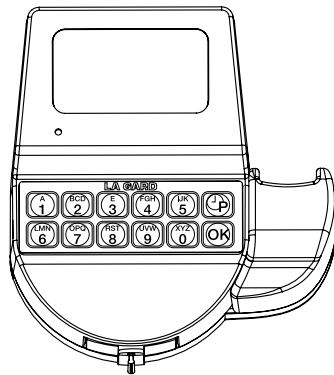
PRODUCT: SMARTLINC II 9150 & SMARTPOINT 9160
BULLETIN: #LG11
DATE: 07/26/2010

New SmartLinc II & SmartPoint Logic Modules Released for Production

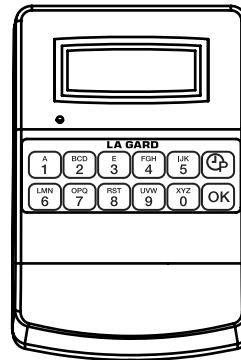
The new Logic Modules for SmartLinc II & SmartPoint, the 9150 and 9160 respectively, have been released for full production. There are no functional changes in the product with the release, simply a change in body style from the previous 9050 and 9060 housings.



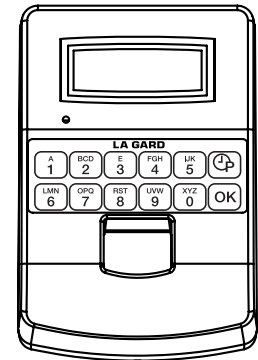
9050



9060



9150



9160

For the SmartPoint 9160 Logic Module, the change in body style facilitated the imbedding of the fingerprint reader in the front of the housing.

The 9150 and 9160 installation footprint is the same as for the 9050 and 9060. The housing, however, is approximately 1/8" longer and the drill footprint is positioned a little differently within the backplate than on the 9050 and 9060. This change in the backplate (Figure 1) occurred due to the required position of the fingerprint reader in the front housing of the 9160.

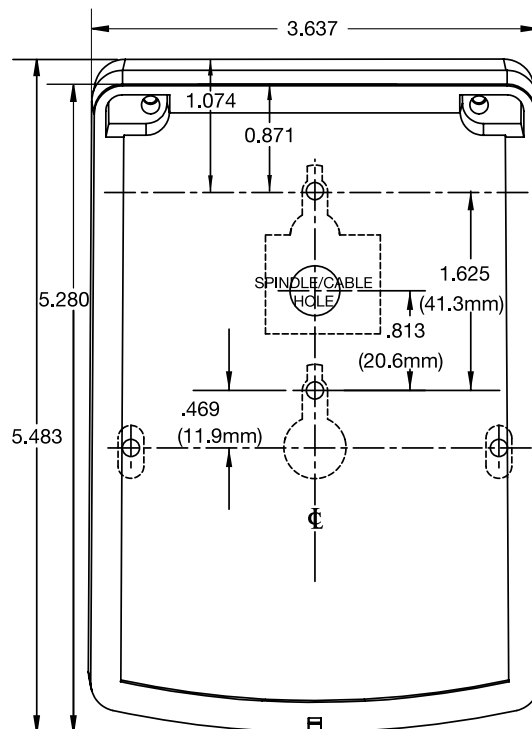


Figure 1. 9150/9160 Dimensions for Mounting (Not to scale.)

Another change that occurred due to the imbedding of the fingerprint reader in the 9160 is the relocation of the emergency battery connection. A covered battery connection is now positioned on the lower right hand side of the housing (Figure 2). To use the emergency battery connection, sufficient clearance for the battery is required to that side of the housing (Figure 3). The battery does not get inserted fully into the housing as in the 9050 and 9060 models.



Figure 2. 9160 Battery Connection



Figure 3. 9160 Battery Clearance Required

The emergency battery connection on the 9150 is located at the bottom of the housing (Figure 4) just as it was in the 9050 and 9060 models. The battery will be inserted fully into the housing. No extra clearance is required.



Figure 4. 9150 Battery Inserts into Housing

The 9050 and 9060 Logic Modules will be discontinued once current inventory is depleted.

The Kaba Safe Lock Division relies on product innovation to meet our markets' ever-changing needs for loss prevention and asset control solutions. The Kaba and LA GARD brands are synonymous worldwide with Security, Control and Accountability.

Kaba Mas • 1-877-KabaMas (522-2627) • 749 W. Short Street • Lexington KY 40508 • www.kaba-mas.com