

## GETTING STARTED INSTRUCTIONS

The GARD Series Software implementation package includes:

- The Software Install CD (707012 ComboGard Pro or 707013 AuditGard)
- 42145 Programming/Audit cable (3125 Entry Device)
- 43097 Programming/Audit cable (for 3190, 3750-K, and 8130 Entry Devices)
- 707010 USB Interface Adapter (or 42150 Serial Interface Adapter)

---

**IMPORTANT NOTE:** *The system driver for the USB Interface Adapter will be installed after the application software. **DO NOT insert the adapter into the PC until the software installation is complete.***

---

If any of the above items are missing, contact your point of sale.

### System Requirements

Minimum hardware and software requirements for Gard Series software:

- IBM compatible PC (Intel® Pentium® 4 or compatible processor) capable of running Windows® with an available USB or serial port
- 512 MB RAM (1GB preferred. Also refer to your operating system requirements.)
- CD-ROM or DVD-ROM Drive
- Hard Disk Drive with at least 6.5 MB available
- Super VGA (1,024x768) or higher-resolution video adapter and monitor
- Windows XP Professional 32-bit (Service Pack 3 or greater), Windows Vista 32-bit or 64-bit (Business Edition), and Windows 7 Professional 32-bit or 64-bit
- Microsoft Mouse or compatible pointing device

---

**NOTE:** *Adobe® Reader requires an additional 335 MB of available hard-disk space and Microsoft Internet Explorer 6.0 or higher.*

---

### Product Documentation

All instructions for the LA GARD software programs are available on the Install CD in PDF format and can be accessed from the Product Documentation menu item. Adobe® Reader is required to view and print the documents; it is included on the Install CD.

---

**NOTE:** *The latest versions of LA GARD documentation are also available for download at [www.kaba-mas.com](http://www.kaba-mas.com).*

---

Before installing the Software, print and carefully review the Software Installation Instructions.

### Print Software Installation Instructions

1. Insert the LA GARD Install CD into the appropriate CD-ROM or DVD-ROM drive of the PC.
2. The Install CD is set to AutoRun. If AutoRun does not initiate, complete the following steps:
  - a. Select the **Start** icon in the lower left of the Windows screen.
  - b. Select the **Run** icon from the Windows menu. The Run Window will be displayed (Figure 1).
  - c. If necessary, change the path to point to the drive being used to install the software.
  - d. Click on the **OK** button.

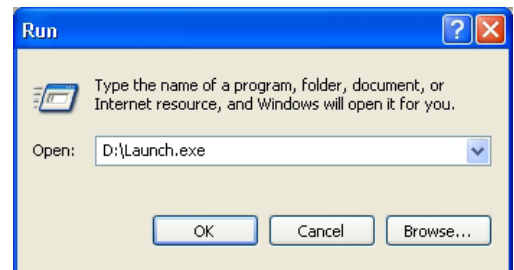


Figure 1.

---

**NOTE:** *An alternate method to initiate the Installation Browser is to right-click on the **START** button, select **Explore** to open your CD-ROM drive, and then select **Launch.exe**.*

---

The main menu of the Installation Browser will display three Menu Options: **Install Software**, **Product Documentation**, and **Contact Us**.

3. Select the **Product Documentation** menu item.
4. If Adobe® Reader 9.0 or above is not installed on the computer, select the **Install Adobe Reader** menu item to install the Adobe Reader software.
5. From the **Product Documentation** menu, select **Install Guides**.
6. From the **Install Guides** menu, select **Software Installation Guide** to open the Software Installation Instructions.
7. From the **File Menu**, select **Print**.
8. Click on the **Back** button to return to the Product Documentation Menu.
9. Click on the **Menu** button to return to the Main Menu.

At this time **Exit** the Installation Browser or continue with the Software Installation, following the Software Installation Instructions.